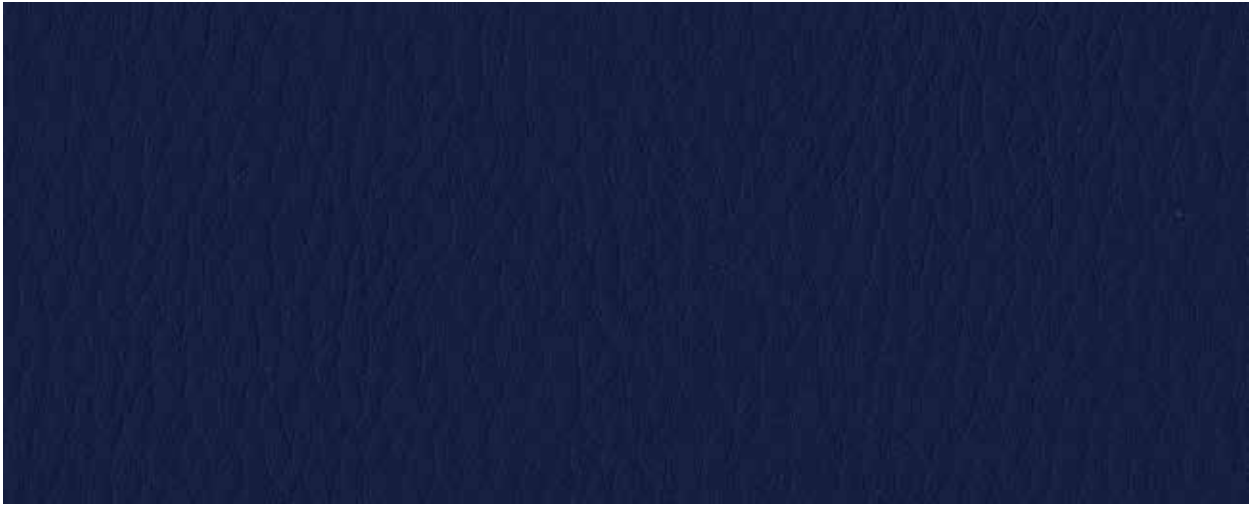
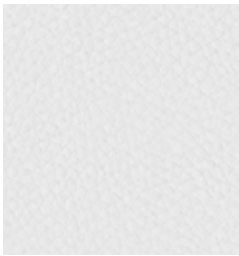


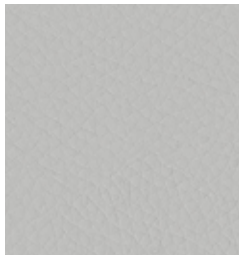
PuraSoft



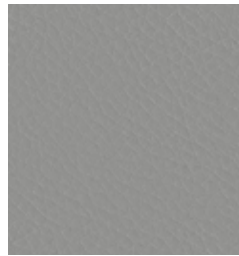
Cobalt
544424



Snow
544416



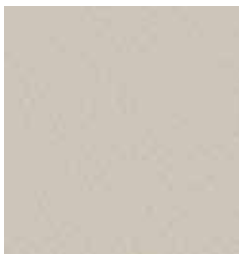
Mist
544421



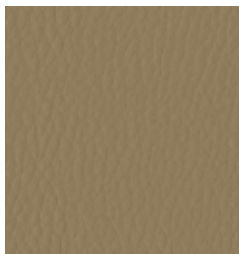
Pewter
544420



Ash
544432



Ivory
544417



New Sand
544418



Stone
544427



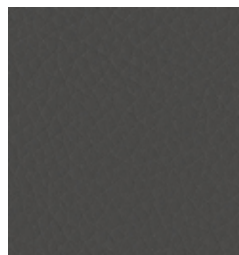
Saddle
544423



Cadet
544419



Cobalt
544424



Metal
544422




Black
544425

PuraSoft

Typical Properties

Surface Content	100% silicone
Width - inches	54
Roll Size - linear yards	25
Weight - oz. / per linear yard	25.6

Performance Requirements

Meets or exceeds ACT Performance Guidelines	
Abrasion Resistance (CFFA-1a) - cycles	
Cotton duck abradant	200,000
Mildew Resistance (ASTM G-21)	Pass
Cold Crack - °F	-40
U.V. Resistance (CFFA-2)	
- Hours outdoor	650
Flame Retardant Rating	
- California Technical Bulletin 117-2013, Section 1	Pass
- IMO Part 8 Upholstered Furniture 3.1 Smoldering Cigarette	Pass
- IMO Part 8 Upholstered Furniture 3.2 Propane Flame	Pass
- FMVSS #302	Pass

Applications	Marine
---------------------	--------

Though our upholsteries can be used in many applications, customers are responsible for selecting an upholstery with attributes that meet the requirements of the specific end-use application – not all upholstery is suitable for all applications.

Multiple factors affect fabric durability and appearance retention, including end-user application and proper maintenance. Wyzenbeek results above 100,000 double rubs have not been shown to be a reliable indicator of increased fabric lifespan.

Day-to-Day Cleaning — Remove ordinary dirt and smudges with mild dish soap and water. Rinse the surface with clean water and dry with a soft, lint-free cloth or towel.

Stain Removal — Nautolex PuraSoft fabric is resistant to most common stains. To keep upholstery looking new, stains such as ballpoint pen can be dry-erased with a clean, lint-free cloth. Gently rub the area until the stain has been removed. Wet or gooey stains such as food stains (e.g., ketchup, mustard or jelly) or topical stains (e.g., lotions and cream) wipe first with a clean cloth or sponge, and then follow the instructions above.

Stubborn Stains — If a ghost stain remains, apply a small amount of household rubbing alcohol (isopropyl alcohol) to a clean, lintfree cloth and rub the stain until it has been removed. Rinse with a clean, damp cloth and go!



North American Office
 25435 Harvard Road
 Beachwood, OH 44122
 United States
 PHONE +1 800 457-9900

ALL OMNOVA PRODUCTS AND SERVICES ARE OFFERED AND SOLD SUBJECT TO THE OMNOVA STANDARD TERMS AND CONDITIONS OF SALE AGREEMENT SET FORTH AT WWW.OMNOVA.COM

*ACT Performance Guidelines icons are registered certification marks owned by the Association for Contract Textiles, Inc. NAUTOLEX is a registered trademark of OMNOVA Solutions Inc.

© 2023 OMNOVA Solutions Inc. 82480. February 2023
 OMNOVA Solutions Inc.