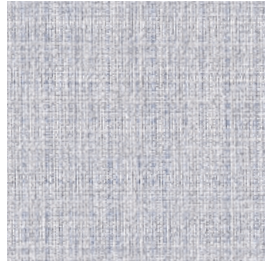
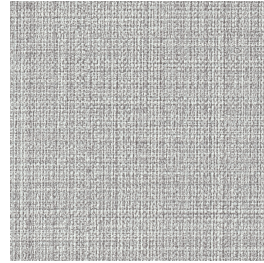




Oyster
546464



Haze
546461



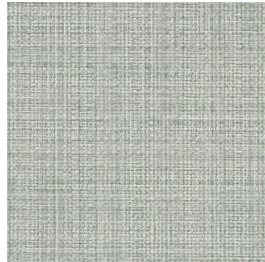
Captain
546495



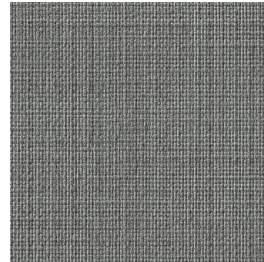
Storm
546460



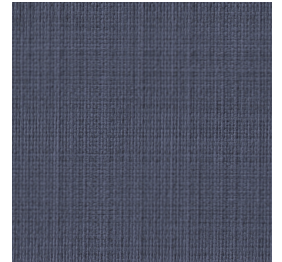
Sail
546494



Seaside
546463



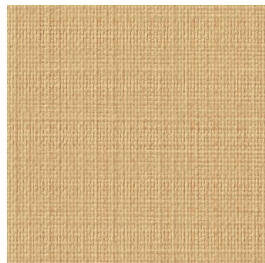
Marsh
546454



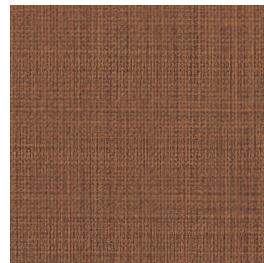
Blue Lagoon
546462



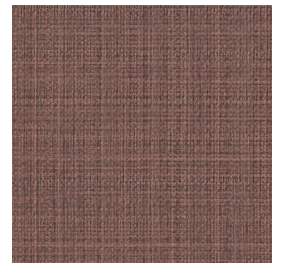
Sand Castle
546457



Beach
546459



Treasure Chest
546458



Driftwood
546455



Conch
546456

Helm

Typical Properties

Content	100% vinyl face, brushed knit backing
Features	Formulated with EU and EPA FIFRA registered and approved biocides. Formulated without PFAS (Per- and Polyfluoroalkyl Substances) Chemicals PreFixx ® Protective Finish
Width - inches	54
Roll Size - linear yards	30
Weight - oz. / per linear yard	30

Performance Requirements

Meets or exceeds ACT Performance Guidelines



CFFA Healthcare 201 Certified	
Abrasion Resistance (CFFA-1a) - cycles	60,000
Wyzenbeek stainless steel wire screen	1,300,000
Cotton duck abradant	1,300,000
Mildew Resistance (ASTM G-21)	Pass
Cold Crack - °F	-20
U.V. Resistance (CFFA-2)	
- Hours outdoor	650
Flame Retardant Rating	
- BIFMA, Class A	Pass
- California Technical Bulletin 117-2013, Section 1	Pass
- IMO Part 8 Upholstered Furniture 3.1 Smoldering Cigarette	Pass
- NFPA 260, Class 1	Pass
- UFAC Fabric, Class 1	Pass
Applications	Interior/Exterior

Though our upholsteries can be used in many applications, customers are responsible for selecting an upholstery with attributes that meet the requirements of the specific end-use application – not all upholstery is suitable for all applications.

Multiple factors affect fabric durability and appearance retention, including end-user application and proper maintenance. Wyzenbeek results above 100,000 double rubs have not been shown to be a reliable indicator of increased fabric lifespan.

Nautolex® products are easily cleaned. For specific cleaning instructions, see downloads at www.omnova.com/product-types/coated-fabrics-upholstery/brands/nautolex