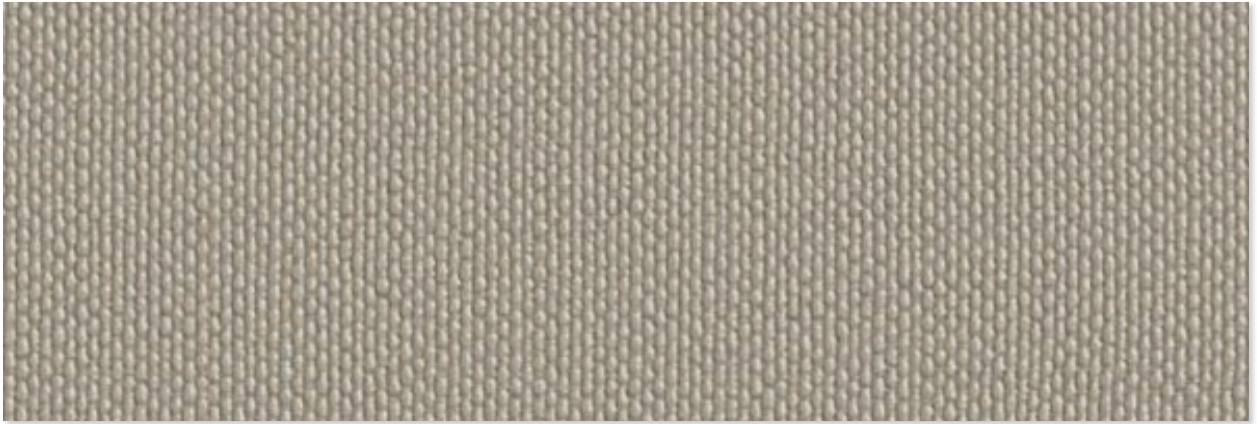


Elysee



Slate
532635



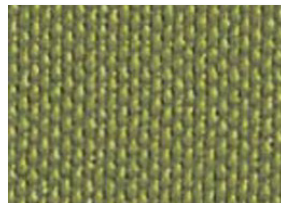
Frost
521418



Silk
532634



Citronella
532639



Palm
532636



Blue Sky
532638



Silver Light
521417



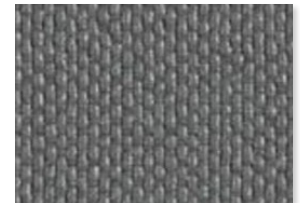
Tahini
521416



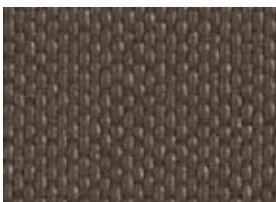
Cayenne
532640



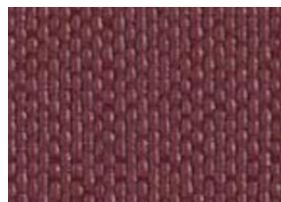
Blueblood
532637



Smoke Stack
541896



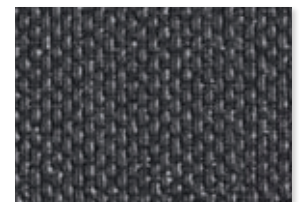
Taupe
522585



Crimson
522214



Midnight Blue
522213





Ash
521419

Elysee

Typical Properties

| | |
|--------------------------------|---|
| Content | 100% vinyl face, polyester brushed knit backing |
| Finish | PreFixx® Protective Finish |
| Width - inches | 54 |
| Roll Size - linear yards | 40 |
| Weight - oz. / per linear yard | 30 |

Performance Requirements

| | |
|---|--|
| Meets or exceeds ACT Performance Guidelines |  |
| CFFA Healthcare 201 Certified |  |
| Abrasion Resistance (CFFA-1a) - cycles | |
| Cotton duck abradant | 1,300,000 |
| Mildew Resistance (ASTM G-21) | Pass |
| Cold Crack - °F | -20 |
| U.V. Resistance (CFFA-2) | |
| - Hours outdoor | 650 |
| Flame Retardant Rating | |
| - BIFMA, Class A | Pass |
| - California Technical Bulletin 117-2013, Section 1 | Pass |
| - NFPA 260, Class 1 | Pass |
| - UFAC Fabric, Class 1 | Pass |

| | |
|---------------------|-----------------|
| Applications | Marine/Contract |
|---------------------|-----------------|

Though our upholsteries can be used in many applications, customers are responsible for selecting an upholstery with attributes that meet the requirements of the specific end-use application – not all upholstery is suitable for all applications.

Multiple factors affect fabric durability and appearance retention, including end-user application and proper maintenance. Wyzenbeek results above 100,000 double rubs have not been shown to be a reliable indicator of increased fabric lifespan.

Nautolex® products are easily cleaned. For specific cleaning instructions, see downloads at www.omnova.com/nautolex

OMNOVA
A Division of **SURTECO**

North American Office
25435 Harvard Road
Beachwood, OH 44122
United States
PHONE +1 800 457-9900

ALL OMNOVA PRODUCTS AND SERVICES ARE OFFERED AND SOLD SUBJECT TO THE OMNOVA STANDARD TERMS AND CONDITIONS OF SALE AGREEMENT SET FORTH AT WWW.OMNOVA.COM

*ACT Performance Guidelines icons are registered certification marks owned by the Association for Contract Textiles, Inc.
CFFA Healthcare 201 icon is a registered certification mark owned by the Chemical Fabrics & Film Association, Inc.
BOLTAFLEX, NAUTOLEX and PREFIXX are registered trademarks of OMNOVA Solutions Inc.
Designed and manufactured by OMNOVA Solutions.

© 2023 OMNOVA Solutions Inc. 82345. April 2023
OMNOVA – A Division of SURTECO.