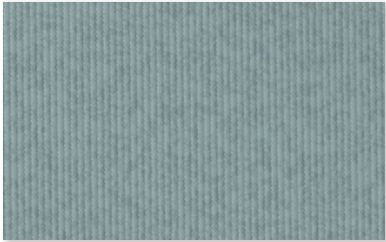
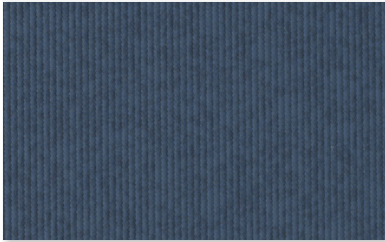


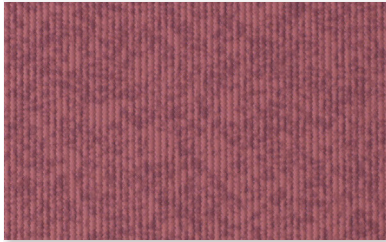
Rio Blue
521909



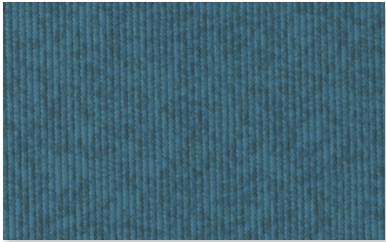
Iced Mint
518411



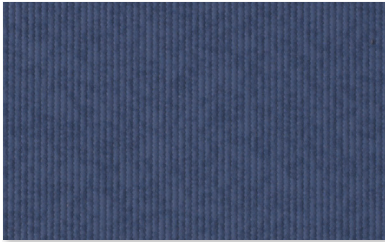
Bonnie Blue
517712



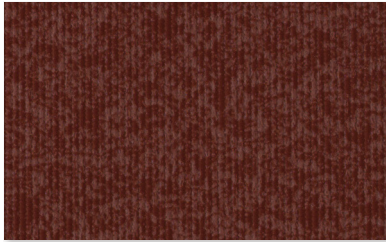
Tea Rose
518410



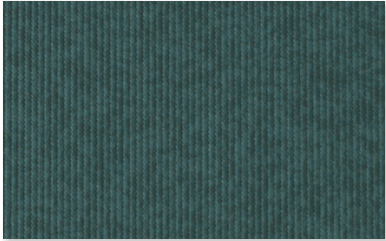
Aquamarine
517713



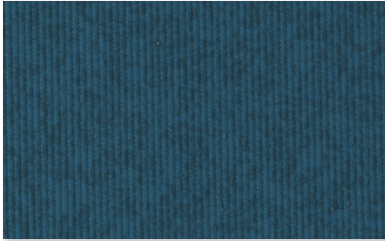
Cobalt
518413



Cranberry
517913



Teal
519040









Navy
517711



Black
517710



Content	100% PVC face, polyester knit backing
Finish	PreFixx® protective finish for increased stain resistance and easy cleaning. Bleach cleanable and may be disinfected with a variety of hospital grade disinfectants without discoloring or damaging the finish. Disinfection does not replace the need for regular care and maintenance. For a list of recommended disinfectants, view the Coated Fabrics Chemical Resistance Technical Bulletin located at https://www.omnova.com/product-types/coated-fabrics-upholstery/for-healthcare .
Weight	36 oz/lin. yd [24 oz/yd ²] / 1,021 g/lin. m [680 g/m ²]
Width	54 in [137 cm]
Performance Requirements	Meets or exceeds ACT Performance Guidelines CFFA Healthcare 201 Certified      
Applications	Indoor/Outdoor • Corporate Office • Food Service • Healthcare • Hospitality and Entertainment • Recreational Vehicles • Retail • Marine

- Also meets or exceeds:
- CFFA-1a Wyzenbeek - 1.3 million double rubs (cotton duck abradant)
 - Fungal resistance ASTM G-21-13
 - Bacterial resistance AATCC 147-2011 & AATCC 100-2004
 - BIFMA, Class A
 - Boston Fire Dept. IX-1
 - California Technical Bulletin 117-2013, Section 1
 - FAR 25.853a & Appendix F Part 1 (a)(1)(ii)
 - Federal Specification CID A-A-2950A
 - FMVSS-302
 - IMO Part 8 Upholstered Furniture 3.1 Smoldering Cigarette
 - IMO Part 8 Upholstered Furniture 3.2 Propane Flame
 - NFPA 701 Small Scale
 - NFPA 260, Class 1
 - Port Authority of NY/NJ
 - UFAC Fabric, Class 1

Though our upholsteries can be used in many applications, customers are responsible for selecting an upholstery with attributes that meet the requirements of the specific end-use application – not all upholstery is suitable for all applications.

Multiple factors affect fabric durability and appearance retention, including end-user application and proper maintenance. Wyzenbeek results above 100,000 double rubs have not been shown to be a reliable indicator of increased fabric lifespan.

For additional cleaning instructions and detailed specification information, visit: www.omnova.com



North American Office
25435 Harvard Road
Beachwood, OH 44122
United States
PHONE +1 800 457-9900

