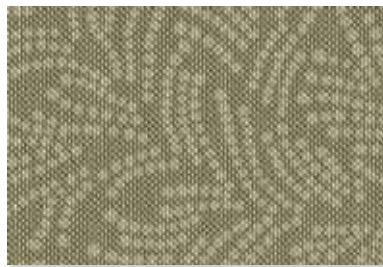




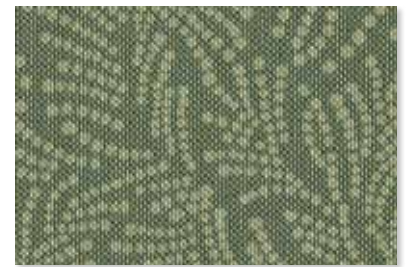
Nile
524778



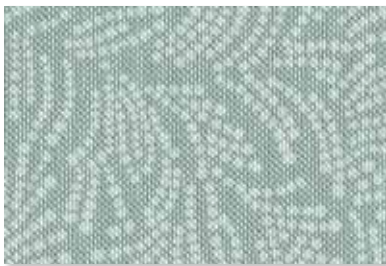
Silk
524781



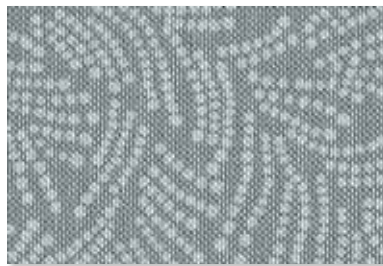
Swamp
524783



Lichen
524777



Ice
524775



Surf
524782



Nile
524778



Sunray
524761



Russet
524780



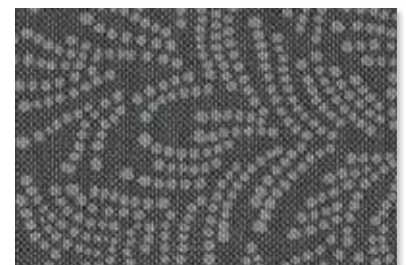
Admiral
524773



Rosita
524779



Cocoa
524774



Knight
524776

Content	100% PVC face, polyester terry loop knit backing
Finish	PreFixx [®] protective finish for increased stain resistance and easy cleaning. Bleach cleanable and may be disinfected with a variety of hospital grade disinfectants without discoloring or damaging the finish. Disinfection does not replace the need for regular care and maintenance.
Width	54 in. [137 cm]
Weight	28 oz/lin. yd. [18.7 oz/yd ²] / 849 g/lin. m [619 g/m ²]
Performance Requirements	Meets or exceeds ACT [®] Performance Guidelines



Also meets or exceeds:

- CFFA-1a Wyzenbeek - 1.3 million double rubs (cotton duck abradant)
- Fungal resistance ASTM G-21-13
- Bacterial resistance AATCC 147-2011 & AATCC 100-2004
- Oil resistance CFFA-13
- Surface resistance AATCC-76 Antistatic
- Urine resistance AATCC-6 Colorfastness to Acids and Alkali
- Resistance to sulfide stain ASTM D 1712
- ASTM E-84 Adhered to GRC, Class 1 or A
- BIFMA, Class A
- Boston Fire Dept. IX-1
- California Technical Bulletin 117-2013, Section 1
- FAR 25.853a & Appendix F Part 1 (a)(1)(ii)
- Federal Specification CID A-A-2950A
- FMVSS-302
- IMO Part 8 Upholstered Furniture 3.1 Smoldering Cigarette
- IMO Part 8 Upholstered Furniture 3.2 Propane Flame
- NFPA 701 Small Scale
- NFPA 260, Class 1
- Port Authority of NY/NJ
- UFAC Fabric, Class 1

Applications	Indoor/Outdoor
	<ul style="list-style-type: none"> • Corporate Office • Healthcare • Recreational Vehicles • Food Service • Hospitality and Entertainment • Retail

Though our upholstery can be used in many applications, customers are responsible for selecting an upholstery with attributes that meet the requirements of the specific end-use application – not all upholstery is suitable for all applications.

Multiple factors affect fabric durability and appearance retention, including end-user application and proper maintenance. Wyzenbeek results above 100,000 double rubs have not been shown to be a reliable indicator of increased fabric lifespan.

For additional cleaning instructions and detailed specification information, visit: www.omnova.com



World Headquarters
25435 Harvard Road
Beachwood, OH 44122
United States
PHONE +1 216 682-7000
FAX +1 216 453-0104