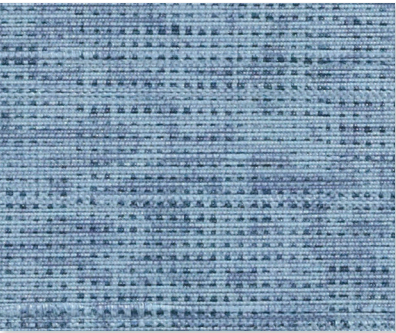
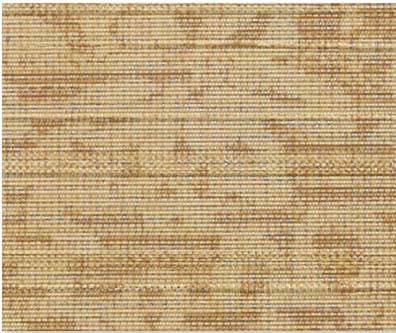


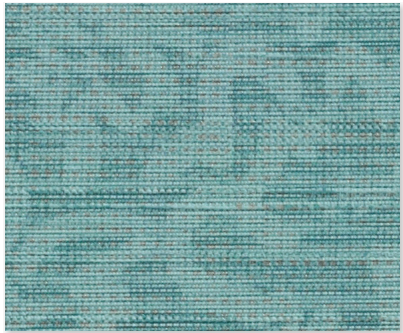
Golden Rod
521608



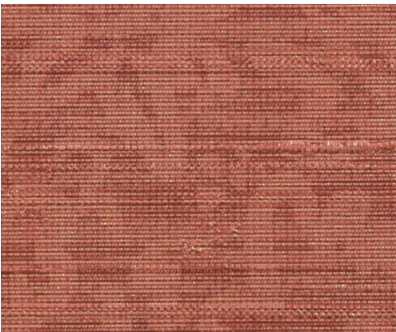
Chamomile
521605



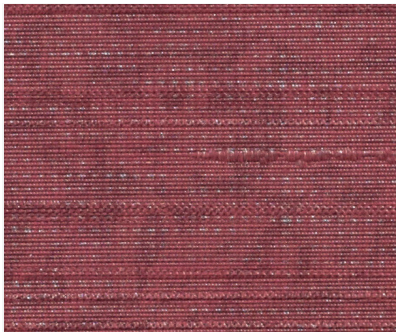
Golden Rod
521608



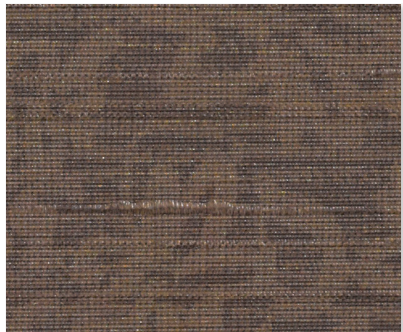
Seagreen
521623



Cornflower
521607



Blue
521603



Bon Bon
521604



Content	100% PVC face, polyester terry loop knit backing
Finish	PreFixx® protective finish for increased stain resistance and easy cleaning. Bleach cleanable and may be disinfected with a variety of hospital grade disinfectants without discoloring or damaging the finish. Disinfection does not replace the need for regular care and maintenance. For a list of recommended disinfectants, view the Coated Fabrics Chemical Resistance Technical Bulletin located at https://www.omnova.com/fileadmin/Resource_Center/Coated_Fabrics/Technical_Bulletins/OMN-ChemRes-TB.pdf .
Weight	28 oz/lin. yd [18.7 oz/yd ²] / 849 g/lin. m [619 g/m ²]
Width	54 in [137 cm]
Performance Requirements	Meets or exceeds ACT Performance Guidelines CFFA Healthcare 201 Certified



Also meets or exceeds:

- CFFA-1a Wyzenbeek - 1.3 million double rubs (cotton duck abradant)
- Fungal resistance ASTM G-21-13
- Bacterial resistance AATCC 147-2011 & AATCC 100-2004
- Oil resistance CFFA-13
- Surface resistance AATCC-76 Antistatic
- Urine resistance AATCC-6 Colorfastness to Acids and Alkali
- Resistance to sulfide stain ASTM D 1712
- BIFMA, Class A
- Boston Fire Dept. IX-1
- California Technical Bulletin 117-2013, Section 1
- FAR 25.853a & Appendix F Part 1 (a)(1)(ii)
- Federal Specification CID A-A-2950A
- FMVSS-302
- IMO Part 8 Upholstered Furniture 3.1 Smoldering Cigarette
- IMO Part 8 Upholstered Furniture 3.2 Propane Flame
- NFPA 701 Small Scale
- NFPA 260, Class 1
- Port Authority of NY/NJ
- UFAC Fabric, Class 1



Applications

Indoor/Outdoor

- Corporate Office • Food Service • Healthcare • Hospitality and Entertainment
- Recreational Vehicles • Retail

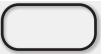
Though our upholsteries can be used in many applications, customers are responsible for selecting an upholstery with attributes that meet the requirements of the specific end-use application – not all upholstery is suitable for all applications.

Multiple factors affect fabric durability and appearance retention, including end-user application and proper maintenance. Wyzenbeek results above 100,000 double rubs have not been shown to be a reliable indicator of increased fabric lifespan.

For additional cleaning instructions and detailed specification information, visit: www.omnova.com



North American Office
 25435 Harvard Road
 Beachwood, OH 44122
 United States
 PHONE +1 800 457-9900



ALL OMNOVA PRODUCTS AND SERVICES ARE OFFERED AND SOLD SUBJECT TO THE OMNOVA STANDARD TERMS AND CONDITIONS OF SALE AGREEMENT SET FORTH AT WWW.OMNOVA.COM

*ACT Performance Guidelines icons are registered certification marks owned by the Association for Contract Textiles, Inc.
 CFFA Healthcare 201 icon is a registered certification mark owned by the Chemical Fabrics & Film Association, Inc.
 BOLTAFLEX, NAUTOLEX and PREFIXX are registered trademarks of OMNOVA Solutions Inc.
 Designed and manufactured by OMNOVA Solutions.

© 2023 OMNOVA Solutions Inc. DTC. Jan 2024.
 OMNOVA Solutions Inc. – A Division of SURTECO.