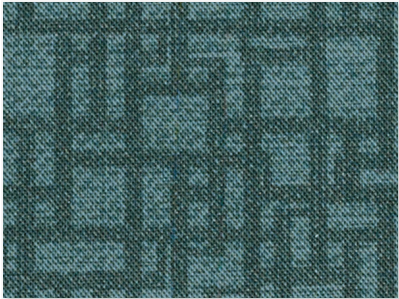
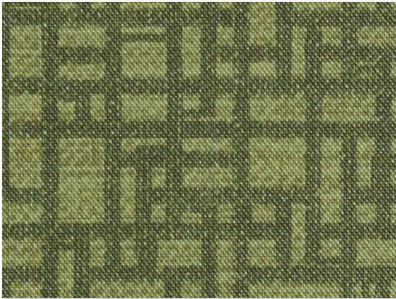


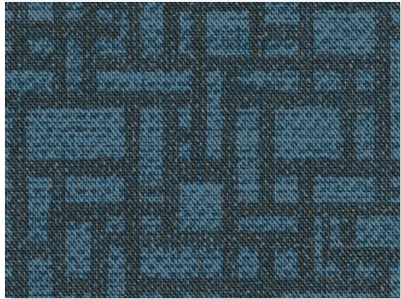
Brown Rice  
520500



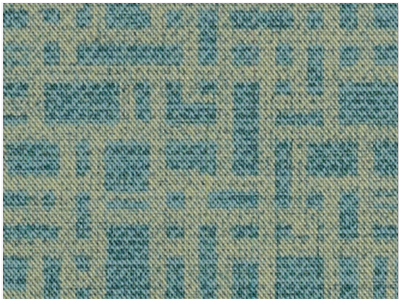
Slate Blue  
520893



Palm Tree  
520892



Blue Jay  
520890



Blue Grass  
520889



Brown Rice  
520500



Chocolate Mousse  
520891

<b>Content</b>	100% PVC face, polyester terry loop knit backing
<b>Finish</b>	<b>PreFixx®</b> protective finish for increased stain resistance and easy cleaning. Bleach cleanable and may be disinfected with a variety of hospital grade disinfectants without discoloring or damaging the finish. Disinfection does not replace the need for regular care and maintenance.
<b>Weight</b>	28 oz./lin. yd [18.7 oz/yd <sup>2</sup> ] / 849 g/lin. m [619 g/m <sup>2</sup> ]
<b>Width</b>	54 in [137 cm]
<b>Performance Requirements</b>	Meets or exceeds ACT Performance Guidelines   CFFA Healthcare 201 Certified



Also meets or exceeds:

- CFFA-1a Wyzenbeek - 1.3 million double rubs (cotton duck abradant)
- Fungal resistance ASTM G-21-13
- Bacterial resistance AATCC 147-2011 & AATCC 100-2004
- Oil resistance CFFA-13
- Surface resistance AATCC-76 Antistatic
- Urine resistance AATCC-6 Colorfastness to Acids and Alkali
- Resistance to sulfide stain ASTM D 1712
- ASTM E-84 Adhered to GRC, Class 1 or A
- BIFMA, Class A
- Boston Fire Dept. IX-1
- California Technical Bulletin 117-2013, Section 1
- FAR 25.853a & Appendix F Part 1 (a)(1)(ii)
- Federal Specification CID A-A-2950A
- FMVSS-302
- IMO Part 8 Upholstered Furniture 3.1 Smoldering Cigarette
- IMO Part 8 Upholstered Furniture 3.2 Propane Flame
- NFPA 701 Small Scale
- NFPA 260, Class 1
- Port Authority of NY/NJ
- UFAC Fabric, Class 1

## Applications

Indoor/Outdoor

- Corporate Office • Food Service • Healthcare • Hospitality and Entertainment
- Recreational Vehicles • Retail

*Though our upholsteries can be used in many applications, customers are responsible for selecting an upholstery with attributes that meet the requirements of the specific end-use application – not all upholstery is suitable for all applications.*

*Multiple factors affect fabric durability and appearance retention, including end-user application and proper maintenance. Wyzenbeek results above 100,000 double rubs have not been shown to be a reliable indicator of increased fabric lifespan.*

For additional cleaning instructions and detailed specification information, visit: [www.omnova.com](http://www.omnova.com)



**North American Office**  
 25435 Harvard Road  
 Beachwood, OH 44122  
 United States  
 PHONE +1 800 457-9900

ALL OMNOVA PRODUCTS AND SERVICES ARE OFFERED AND SOLD SUBJECT TO THE OMNOVA STANDARD TERMS AND CONDITIONS OF SALE AGREEMENT SET FORTH AT [WWW.OMNOVA.COM](http://WWW.OMNOVA.COM)

\*ACT Performance Guidelines icons are registered certification marks owned by the Association for Contract Textiles, Inc.  
 CFFA Healthcare 201 icon is a registered certification mark owned by the Chemical Fabrics & Film Association, Inc.  
 BOLTAFLEX, NAUTOLEX and PREFIX are registered trademarks of OMNOVA Solutions Inc.  
 Designed and manufactured by OMNOVA Solutions Inc.

© 2023 OMNOVA Solutions Inc. DTC. Jan 2024.  
 OMNOVA Solutions Inc. – A Division of SURTECO.